

Pinworms

A pinworm infection, also known as enterobiasis or oxyuriasis, is one of the most common types of human intestinal [worm infections](#) in the United States.

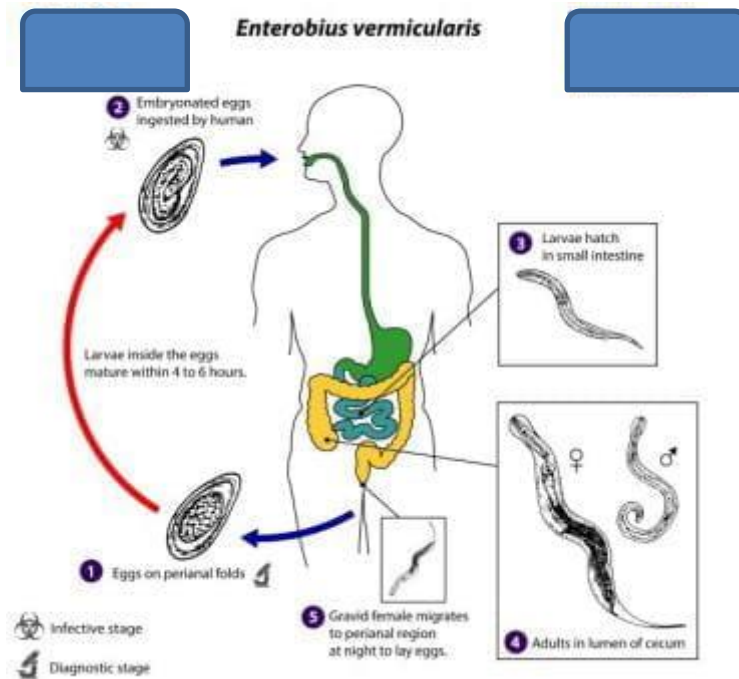
Morphology:

1-Eggs

2- Adult (male and female)







Pinworms are white, narrow worms that can range in size from 8 to 13 millimeters for females and 2 to 5 millimeters for males.

Pinworms, also known as threadworms, are tiny white or light gray worms that cause the common infection called enterobiasis..

People of all ages can become infected with pinworms, but the infections are found most often in children. Caregivers and family members of infected children have a higher risk of infection.

preschools, and schools are often the source of a pinworm infection.

People who live in institutions are also commonly affected by pinworms.

SYMPTOMS

Symptoms of a pinworm infection (enterobiasis) include:

1-Anal itching, especially at night: Pinworms lay their eggs around the anus at night, causing itching and irritation. While symptoms are usually mild, anal itching can be severe.

2-Sleeplessness: Because anal itching is worse at night, people suffering from a pinworm infection can have trouble sleeping, which can lead to decreased concentration, tiredness and weight loss.

3-Vaginal itching: In females, symptoms can also include vaginal discharge and itching in the vaginal area.

How do people get pinworms

Pinworm infection occurs when someone swallows pinworm eggs, usually in the following manner:

1. Pinworms lay their eggs on the skin around the anus of an infected person.
2. When that person touches or scratches his or her anus, the eggs stick to the fingers and fingernails.
3. The eggs are then transferred to surfaces and to other people, who swallow them when they touch their mouths.
4. The eggs travel through the digestive system of the infected person and hatch in the intestines.
5. Once hatched, the female pinworms make their way to the anus to lay their eggs.

Pinworm eggs can survive for 2-3 weeks on fingers, under fingernails, and on surfaces such as linens, clothing or toilet seats. The tiny eggs can only be seen under a microscope.

A pinworm infection can also be spread through:

1-Bed sheets and undergarments: Eggs can spread through contact with contaminated sheets, towels or underwear of infected people.

2-Inhalation: Because the eggs are so tiny, they can travel through the air and inhaled. Once inhaled, they travel through the digestive tract, hatch and lay their own eggs.

3-Dogs and cats: While pinworms are usually transmitted from human to human, dogs and cats can carry the eggs on their fur and transfer them to humans.

DIAGNOSIS :

1-CLINICALLY

2-LAB.DIAGNOSIS

The most common symptom of a pinworm infection is intense itching around the anus. Infections are contagious.

Pinworm infections can spread easily. They most commonly occur in school-aged children and people who live in close quarters (such as institutions). They also occur often in those who have regular, close contact with individuals in these groups.